



Alvarez & Marsal Canada ULC
400 Burrard Street, Suite 1680, Commerce Place
Vancouver, BC. V6C 3A6

May 19, 2020

Government of the Northwest Territories
Office of the Regulator of Oil and Gas Operations (OROGO)
P.O. Box 1320, Yellowknife, NT X1A 2L9

Attention: Pauline de Jong, Chief Conservation Officer

Via Email: orogo@gov.nt.ca

Well Operations Report – Cameron Hills J-62 Well (ACW-2019-004-SOG-J-62-WID1158)

In response to OROGO's Letter dated May 19, 2020. Alvarez & Marsal Canada ULC response dated May 19, 2020 hereby provides OROGO with the following requested information:

This cover letter and the affiliated well operations reporting for operations conducted to suspend the subject well, including; A summary of well operations, daily operation reports and a current well diagram. In separate attachments are the Cement Bond Log and interpretation documents.

We trust the foregoing to be in order however, should you require additional information, please contact the undersigned at mbujold@energyworks.management or 403.606.4220.

Sincerely, on behalf of Alvarez & Marsal Canada ULC

A handwritten signature in blue ink, appearing to read 'Maurice Bujold', written over a horizontal line.

Maurice Bujold

VP, Completions, Energy Works Management

cc. Orest Knonwalchuk, Managing Director, A&M
Viki Chan, Vice President, Alvarez & Marsal Canada ULC
Sean David, Sr. Completions Engineer, Energy Works Management

Encl.



Well Suspension Summary
STRATEGIC HB ET AL CAMERON J-62 60 10N, 117 15W • #1158

WELL DATA				
NAME	LICENSE #	COST CENTRE	UWI	LOCATION
STRATEGIC HB ET AL CAMERON J-62 60 10N, 117 15W	1158			Cameron Hills NT, Canada
COMPLETIONS DETAIL				
COMPLETIONS TYPE	START DATE	FINISH DATE	OBJECTIVE	
Standing Cased	2020-03-05	2020-03-13	Well Suspension	
JOB SUMMARY				
Suspend Well, inhibit and freeze protect well				

DRILLING DATA						
DRILLING GENERAL						
EVENT	DRILLING START	SPUD DATE	RELEASE DATE			
Drilling						
SURFACE HOLE						
LATITUDE	LONGITUDE					
0.00000000	0.00000000					
WELLBORES						
Original Hole						
START	END					
-	-					
LATITUDE	LONGITUDE					
0.00000000	0.00000000					
UWI						
KICKOFF	HEEL	PROJECTED	MEASURED	TVD	LOGGER	
-	-	-	-	-		
DRILLING ELEVATIONS						
SURVEYED	CUT / FILL	GROUND	KB > GROUND	KB	CF > GROUND	CF
751.90 m	0.00 m	751.90 m	3.10 m	755.00 m	0.00 m	751.90 m
BRIDGE PLUG						
MANUFACTURER	MODEL		SET DEPTH	BACK DEPTH		
			-	-		
CASING BOWL						
TYPE	MAKE		SERIAL #	CASING SIZE		
WORK PRESSURE	WEIGHT LANDED		NOMINAL SIZE	SLIP & SEAL ASSM		
			-			

WELL SUSPENSION DETAILS						
ELEVATIONS					BOTTOM HOLE	
GROUND	KB > GROUND	KB	CF > GROUND	CF	ESTIMATED TEMP	ESTIMATED PRESS
751.90 m	3.10 m	755.00 m	0.00 m	751.90 m	-	-
TH > GROUND	KB > TH	DH > GROUND	KB > DH		ESTIMATED H2S	ESTIMATED CO2
-	3.10 m	-	3.10 m		-	-
COMPLETIONS RIGS					DAILY STATISTICS	
CONTRACTOR	#	START	RELEASE		TOTAL RENTALS	RIG TIME
Precision Well Servicing	834	2020-03-20			-	41.00 hr
FLUIDS					MAN HOURS	% COMPLETE
FLUID	TANK	TO WELL	FROM WELL	IN WELL	0.00 hr	0.00%
LOAD FLUID		0.00 m³		0.00 m³		
fresh water	18.10 m³	7.50 m³	-	7.50 m³		
TOTAL		7.50 m³	0.00 m³			
RECENT DAILY OPERATIONS - 2020-03-13						
DAILY STATUS						
Inhibit and winterize casing						
24 HOUR SUMMARY						
Inhibit and winterize casing						
NEXT 24 HOURS						





STRATEGIC HB ET AL CAMERON J-62 60 10N, 117 15W - Well Suspension Daily Reports
STRATEGIC HB ET AL CAMERON J-62 60 10N, 117 15W • #1158

WELL DATA				
NAME	LICENSE #	LOCATION	EVENT	AFE NUMBER
STRATEGIC HB ET AL CAMERON J-62 60 10N, 117 15W	1158	Cameron Hills NT, Canada	Well Suspension	20EWM-AB-002
COMPLETION TYPE	START DATE	END DATE	OBJECTIVE	
Standing Cased	2020-03-05	2020-03-13	Well Suspension	
COMPLETIONS DAILY REPORTS				
DATE	SUMMARY			
2020-03-05	Spot equipment, read & record pressures, install BOPs, unseat anchor seal assembly, POOH & scope tubing.			
2020-03-06	Run in set Bridge plug at 1372.0 mKB, Set pull up spot 20 m cement cap, pull out of the hole laying down tubing, Rig out and Move to A 03			
2020-03-12	Conduct Radial Cement Bond log			
2020-03-13	Inhibit and winterize casing			



Daily Well Suspension Report - 2020-03-13 - Day #4
STRATEGIC HB ET AL CAMERON J-62 60 10N, 117 15W • #1158

WELL DATA									
LICENSE #		UWI		EVENT		AFE NUMBER		AFE \$	
1158				Well Suspension		20EWM-AB-002			
GROUND ELE	KB > GROUND	KB ELE	CF > GROUND	TH > GROUND	KB > TH	DH > GROUND	KB > DH		
751.90 m	3.10 m	755.00 m	0.00 m	-	3.10 m	-	3.10 m		
REPORT DETAILS									
REPORT DATE	PERCENT COMPLETE		RIG TIME		TOTAL RIG TIME		MAN HOURS		TOTAL MAN HOURS
2020-03-13	-		-		41.00 hr		-		0.00 hr
TOTAL TIME	NON-PRODUCTIVE		FLARE VOLUME		TOTAL DAILY FLARE		CASING PRESSURE		TUBING PRESSURE
1.00 hr	0.00 hr		-		0.00 e³m³		-		-
DAILY OPERATIONS							WEATHER		
DAILY STATUS Inhibit and winterize casing 24 HOUR SUMMARY Inhibit and winterize casing NEXT 24 HOURS							GENERAL		
							Clear sky		
							ROAD CONDITION		
							Winter roads good shape		
							TIME TEMP		
							11:30 -17°C		
TIME LOG									
FROM	TO	DUR	NPT CODE	DETAILS					
12:30	13:30	1.0 h		eld safety meeting, review hazards MSDS of CPF-119WT PPE requirements pressures and pump fill rates. SICP 0 Loaded 80 liters of PureChem CPF-119WT inhibitor and 100 liters 50/50 methanol water mixed filled casing pressured up to 200 kpa bled off pressure to 0 secured well head chained and locked masters and casing valves. Released equipment					
DAILY FLUIDS									
COMPANY	TICKET	SOURCE/DESTINATION	LEASE		WELL		REMAINING		
			TO	FROM	TO	FROM	TANK	WELL	
"fresh water"									
			TODAY	0.00 m³	0.00 m³	0.00 m³	0.00 m³	0.00 m³	0.00 m³
			RUNNING	25.60 m³	0.00 m³	7.50 m³	0.00 m³	18.10 m³	7.50 m³



Daily Well Suspension Report - 2020-03-12 - Day #3
STRATEGIC HB ET AL CAMERON J-62 60 10N, 117 15W • #1158

WELL DATA								
LICENSE #	UWI		EVENT		AFE NUMBER		AFE \$	
1158			Well Suspension		20EWM-AB-002			
GROUND ELE	KB > GROUND	KB ELE	CF > GROUND	TH > GROUND	KB > TH	DH > GROUND	KB > DH	
751.90 m	3.10 m	755.00 m	0.00 m	-	3.10 m	-	3.10 m	
REPORT DETAILS								
REPORT DATE	PERCENT COMPLETE	RIG TIME	TOTAL RIG TIME		MAN HOURS	TOTAL MAN HOURS		
2020-03-12	-	-	41.00 hr		-	0.00 hr		
TOTAL TIME	NON-PRODUCTIVE	FLARE VOLUME	TOTAL DAILY FLARE		CASING PRESSURE	TUBING PRESSURE		
5.75 hr	0.00 hr	-	0.00 e³m³		-	-		
DAILY OPERATIONS					WEATHER			
DAILY STATUS 24 HOUR SUMMARY Conduct Radial Cement Bond log NEXT 24 HOURS					GENERAL			
					-25 with brisk wind -33 Wind chill clear			
					ROAD CONDITION			
					winer ice roads			
					TIME	TEMP		
					07:00	-25°C		
TIME LOG								
FROM	TO	DUR	NPT CODE	DETAILS				
07:00	07:30	0.5 h		Travel from camp to location. Hold operational safety meeting and issue safe work permits				
07:30	12:45	5.25 h		Rig in Spectrum E-line. Conduct a Radial cement bond log high speed pass to 1340 mKB. Fluid level @ 20 mKB. Conduct a slow speed pass out of hole logging to surface. Field Estimate cement top @ 781 mKB and cement bond @ 784 mKB. Rig out Spectrum E-line. Install New wind sock and install new chain and pad lock. Travel to A-03				
DAILY FLUIDS								
COMPANY	TICKET	SOURCE/DESTINATION	LEASE		WELL		REMAINING	
			TO	FROM	TO	FROM	TANK	WELL
"fresh water"								
			TODAY	0.00 m³	0.00 m³	0.00 m³	0.00 m³	0.00 m³
			RUNNING	25.60 m³	0.00 m³	7.50 m³	0.00 m³	18.10 m³ 7.50 m³

WELL DATA								
LICENSE #	UWI		EVENT		AFE NUMBER		AFE \$	
1158			Well Suspension		20EWM-AB-002			
GROUND ELE	KB > GROUND	KB ELE	CF > GROUND	TH > GROUND	KB > TH	DH > GROUND	KB > DH	
751.90 m	3.10 m	755.00 m	0.00 m	-	3.10 m	-	3.10 m	
REPORT DETAILS								
REPORT DATE	PERCENT COMPLETE	RIG TIME	TOTAL RIG TIME		MAN HOURS	TOTAL MAN HOURS		
2020-03-06	0%	24.00 hr	41.00 hr		0.00 hr	0.00 hr		
TOTAL TIME	NON-PRODUCTIVE	FLARE VOLUME	TOTAL DAILY FLARE		CASING PRESSURE	TUBING PRESSURE		
17.00 hr	0.00 hr	0.00 e³m³	0.00 e³m³		0.00 kPa	0.00 kPa		
DAILY OPERATIONS					WEATHER			
DAILY STATUS Finish zonal abandonment & rig out 24 HOUR SUMMARY Run in set Bridge plug at 1372.0 mKB, Set pull up spot 20 m cement cap, pull out of the hole laying down tubing, Rig out and Move to A 03 NEXT 24 HOURS					GENERAL			
					Overcast light snow North wind 10 to 15 km			
					ROAD CONDITION			
					Winter roads Good shape			
					TIME	TEMP		
06:00	32°C							
TIME LOG								
FROM	TO	DUR	NPT CODE	DETAILS				
00:00	00:30	0.5 h		Crew lunch brake and warm up.				
00:30	02:00	1.5 h		Checked well for pressure 0 both sides continued out of the hole inspecting 73 mm tubing laying out bad joints and anchor seal assemble. Total pulled 142 joints Yellow 133 Blue 1 Red 8. and Baker sliding sleeve, pup, anchor seal. Made up bridge plug on 3 m handling pup stopped for a coffee and warm up. Topics discussed Cold weather with windshield factor add in, Trip speed running in with the bridge and the new crew members the reasons why we tally in the hole.				
02:00	06:00	4.0 h		Checked well pressures 0 both sides Tallied tubing in the hole started in the hole with a 10 K permanent bridge plug to be set at 1372.0 mKB marked collar at 1364.5 mKB meterd down making up pups we had pips problem, traveled to I-73 to pick up needed pups.				
06:00	07:00	1.0 h		Wait on pups to arrive from I 73				
07:00	07:20	0.33 h		Hold operational safety meeting identifying hazards and issue safe work permit.				
07:20	09:00	1.67 h		Replace bad pup joint and place Permanent packer C.E @ 1372 mKB metered depth Rig pump to pump 4 m3 of fresh water and pressure up TBG to 14 mPa and set permanent bridge plug. Fill annulus and pressure test CSG and Permanent Bridge plug to 7 mPa - Good 15 minute test. Zero bleed off. Rotate and release, pull up hole 0.5 m.				
09:00	10:45	1.75 h		Mix 250 liters of Oilwell Class G cement (17 bags) and pour into TBG. Pump 4.0 m3 of fresh water down TBG to displace cement. POOH with pup joints and 1 joints TBG and lay down. Cement top @ 1351 mKB. TBG bottom @ 1395 mKB. Reverse circulate TBG pumping 6 m3 fresh water. No cement in returns.				
10:45	12:00	1.25 h		Prepare tempory TBG rack on ground. Pull out of hole laying down tubing.				
12:00	12:30	0.5 h		Perform BOP drill with all on location. Good drill by all securing well and to muster #2 in 1 min 10 seconds. Review drill with all. Lunch break and warm up.				
12:30	14:45	2.25 h		Pull out of hole laying down TBG to Joint # 130 out. Fill hole with fresh water. Pull remaining joints out of hole and lay down.				
14:45	17:00	2.25 h		Rig out tarps and handling equipment, rig floor, boiler lines and pump lines remove BOP's and rack, and rig out and start moving equipment to A-03. Crew change and handover.				
DAILY FLUIDS								
COMPANY	TICKET	SOURCE/DESTINATION	LEASE		WELL		REMAINING	
			TO	FROM	TO	FROM	TANK	WELL
"fresh water"								
			TODAY	0.00 m³	0.00 m³	0.00 m³	0.00 m³	0.00 m³
			RUNNING	25.60 m³	0.00 m³	7.50 m³	0.00 m³	18.10 m³ 7.50 m³



Daily Well Suspension Report - 2020-03-05 - Day #1
STRATEGIC HB ET AL CAMERON J-62 60 10N, 117 15W • #1158

WELL DATA								
LICENSE #	UWI		EVENT		AFE NUMBER		AFE \$	
1158			Well Suspension		20EWM-AB-002			
GROUND ELE	KB > GROUND	KB ELE	CF > GROUND	TH > GROUND	KB > TH	DH > GROUND	KB > DH	
751.90 m	3.10 m	755.00 m	0.00 m	-	3.10 m	-	3.10 m	
REPORT DETAILS								
REPORT DATE	PERCENT COMPLETE		RIG TIME	TOTAL RIG TIME	MAN HOURS		TOTAL MAN HOURS	
2020-03-05	0%		17.00 hr	17.00 hr	0.00 hr		0.00 hr	
TOTAL TIME	NON-PRODUCTIVE		FLARE VOLUME	TOTAL DAILY FLARE	CASING PRESSURE		TUBING PRESSURE	
17.00 hr	0.00 hr		0.00 e³m³	0.00 e³m³	2,300.00 kPa		6,230.00 kPa	
DAILY OPERATIONS					WEATHER			
DAILY STATUS Move on location & pull pipe 24 HOUR SUMMARY Spot equipment, read & record pressures, install BOPs, unseat anchor seal assembly, POOH & scope tubing. NEXT 24 HOURS Run in with 139.7 mm bridge plug and set 1372 mkb, Circulate 250 lites Class G cement (20 m cap) on the bridge plug.					GENERAL			
					overcast brisk wind			
					ROAD CONDITION			
					Winter roads			
					TIME	TEMP		
07:00	-25°C							
TIME LOG								
FROM	TO	DUR	NPT CODE	DETAILS				
07:00	13:00	6.0 h		Complete rigging out equipment and move onto location, spotting equipment to OROGO and EWM specifications. Rig up over well center. Conduct a 10 min Bubble test on SCV - Zero Bubbles & Zero LELs. Run pump lines, boiler lines and testers lines. Heat to well head and BOP's				
13:00	14:50	1.83 h		Read & record SITP = 6532 kPa SICP = 2300 kPa Bleed off TBG to testers to 2327 kPa and fluid to surface. Bleed off CSG to zero..				
14:50	19:00	4.17 h		Pump 6 m3 fresh water down TBG and TBG went on a vacuum. Pump 2.6 m3 down CSG and CSG at zero. Remove upper section of well head and install stabbing valve and pup joint. Install stump tested BOP's Blind Rams and Pipe rams and Stabbing valve to 1.4 mPa and 14 mPa for 10 min each - Good tests Pressure test annular bag to 1.4 mPa and 7 mPa - Good. Function test accumulator and document. Remove upper well head and strip on tested BOP's and nipple up. Pressure test pipe rams, ring gasket to 1.4 mPa and 14 mPa for 10 min - Good test. Rig in floor and handling equipment, and tarps. Remove lag screws (very tight).				
19:00	19:15	0.25 h		Held daily operations hazard assessment safety meeting with all personal issued safe work permit				
19:15	21:00	1.75 h		Pumped 1.5 m3 down tubing pressured up to 7 mpa pressure bled off to 0 quickly to a slight vacuum 0 on the casing, Picked up on tubing 9 daN to move tubing hanger pulled up to 12 daN working tubing slowly stopped with 10 daN rotated 6 turns to the right started up slowly turning to the right the seal assemble released at 14.0 daN pulled and layed down tubing hanger. Rigged in CJ's tubing inspection secured well. -27 C, 15 to 20 km North wind.				
21:00	00:00	3.0 h		Checked pressures 0 blot side started out of the hole inspecting 73 mm J-55 out of the standing in the mast pulled 100 joints HELD blow out drill 1 min 26 sec to muster point, with the well secure crew lunch brake and warm up.				
DAILY FLUIDS								
COMPANY	TICKET	SOURCE/DESTINATION	LEASE		WELL		REMAINING	
			TO	FROM	TO	FROM	TANK	WELL
"fresh water"								
Longway Services	66548	I-73	25.60 m³		7.50 m³		25.60 m³	0.00 m³
NOTE	Well kill						18.10 m³	7.50 m³
			TODAY	25.60 m³	0.00 m³	7.50 m³	0.00 m³	7.50 m³
			RUNNING	25.60 m³	0.00 m³	7.50 m³	0.00 m³	7.50 m³

WELL DATA					
NAME		LICENSE #	COST CENTRE	UWI	LOCATION
STRATEGIC HB ET AL CAMERON J-62 60 10N, 117 15W		1158		Unavailable	Cameron Hills NT, Canada
COMPLETIONS DATA					
NAME		START DATE	END DATE	AFE #	AFE AMOUNT
Well Suspension		2020-03-05	2020-03-13	20EWM-AB-002	\$0.00
TIME LOG					
FROM	TO	DUR	NPT	CODE	DETAIL
Completions Daily Report • 2020-03-05					
07:00	13:00	6.00			Complete rigging out equipment and move onto location, spotting equipment to OROGO and EWM specifications. Rig up over well center. Conduct a 10 min Bubble test on SCV - Zero Bubbles & Zero LELs. Run pump lines, boiler lines and testers lines. Heat to well head and BOP's
13:00	14:50	1.83			Read & record SITP = 6532 kPa SICP = 2300 kPa Bleed off TBG to testers to 2327 kPa and fluid to surface. Bleed off CSG to zero..
14:50	19:00	4.17			Pump 6 m3 fresh water down TBG and TBG went on a vacuum. Pump 2.6 m3 down CSG and CSG at zero. Remove upper section of well head and install stabbing valve and pup joint. Install stump tested BOP's Blind Rams and Pipe rams and Stabbing valve to 1.4 mPa and 14 mPa for 10 min each - Good tests Pressure test annular bag to 1.4 mPa and 7 mPa - Good. Function test accumulator and document. Remove upper well head and strip on tested BOP's and nipple up. Pressure test pipe rams, ring gasket to 1,4 mPa and 14 mPa for 10 min - Good test. Rig in floor and handling equipment, and tarps. Remove lag screws (very tight).
19:00	19:15	0.25			Held daily operations hazard assessment safety meeting with all personal issued safe work permit
19:15	21:00	1.75			Pumped 1.5 m3 down tubing pressured up to 7 mpa pressure bled off to 0 quickly to a slight vacuum 0 on the casing. Picked up on tubing 9 daN to move tubing hanger pulled up to 12 daN working tubing slowly stopped with 10 daN rotated 6 turns to the right started up slowly turning to the right the seal assemble released at 14.0 daN pulled and layed down tubing hanger. Rigged in CJ's tubing inspection secured well. -27 C, 15 to 20 km North wind.
21:00	00:00	3.00			Checked pressures 0 blot side started out of the hole inspecting 73 mm J-55 out of the standing in the mast pulled 100 joints HELD blow out drill 1 min 26 sec to muster point, with the well secure crew lunch brake and warm up.
TOTAL		17.00	hr		
Completions Daily Report • 2020-03-06					
00:00	00:30	0.50			Crew lunch brake and warm up.
00:30	02:00	1.50			Checked well for pressure 0 both sides continued out of the hole inspecting 73 mm tubing laying out bad joints and anchor seal assemble. Total pulled 142 joints Yellow 133 Blue 1 Red 8. and Baker sliding sleeve, pup, anchor seal. Made up bridge plug on 3 m handling pup stopped for a coffee and warm up. Topics discussed Cold weather with windshield factor add in, Trip speed running in with the bridge and the new crew members the reasons why we tally in the hole.
02:00	06:00	4.00			Checked well pressures 0 both sides Tallied tubing in the hole started in the hole with a 10 K permanent bridge plug to be set at 1372.0 mKB marked collar at 1364.5 mKB meterd down making up pups we had pips problem, traveled to I-73 to pick up needed pups.
06:00	07:00	1.00			Wait on pups to arrive from I 73
07:00	07:20	0.33			Hold operational safety meeting identifying hazards and issue safe work permit.
07:20	09:00	1.67			Replace bad pup joint and place Permanent packer C.E @ 1372 mKB metered depth Rig pump to pump 4 m3 of fresh water and pressure up TBG to 14 mPa and set permanent bridge plug. Fill annulus and pressure test CSG and Permanent Bridge plug to 7 mPa - Good 15 minute test. Zero bleed off. Rotate and release, pull up hole 0.5 m.
09:00	10:45	1.75			Mix 250 liters of Oilwell Class G cement (17 bags) and pour into TBG. Pump 4.0 m3 of fresh water down TBG to displace cement. POOH with pup joints and 1 joints TBG and lay down. Cement top @ 1351 mKB. TBG bottom @ 1395 mKB. Reverse circulate TBG pumping 6 m3 fresh water. No cement in returns.
10:45	12:00	1.25			Prepare tempory TBG rack on ground. Pull out of hole laying down tubing.
12:00	12:30	0.50			Perform BOP drill with all on location. Good drill by all securing well and to muster #2 in 1 min 10 seconds. Review drill with all. Lunch break and warm up.
12:30	14:45	2.25			Pull out of hole laying down TBG to Joint # 130 out. Fill hole with fresh water. Pull remaining joints out of hole and lay down.
14:45	17:00	2.25			Rig out tarps and handling equipment, rig floor, boiler lines and pump lines remove BOP's and rack, and rig out and start moving equipment to A-03. Crew change and handover.
TOTAL		17.00	hr		
Completions Daily Report • 2020-03-12					
07:00	07:30	0.50			Travel from camp to location. Hold operational safety meeting and issue safe work permits
07:30	12:45	5.25			Rig in Spectrum E-line. Conduct a Radial cement bond log high speed pass to 1340 mKB. Fluid level @ 20 mKB. Conduct a slow speed pass out of hole logging to surface. Field Estimate cement top @ 781 mKB and cement bond @ 784 mKB. Rig out Spectrum E-line. Install New wind sock and install new chain and pad lock. Travel to A-03
TOTAL		5.75	hr		
Completions Daily Report • 2020-03-13					
12:30	13:30	1.00			eld safety meeting, review hazards MSDS of CPF-119WT PPE requirements pressures and pump fill rates. SICP 0 Loaded 80 liters of PureChem CPF-119WT inhibitor and 100 liters 50/50 methanol water mixed filled casing pressured up to 200 kpa bled off pressure to 0 secured well head chained and locked masters and casing valves. Released equipment
TOTAL		1.00	hr		

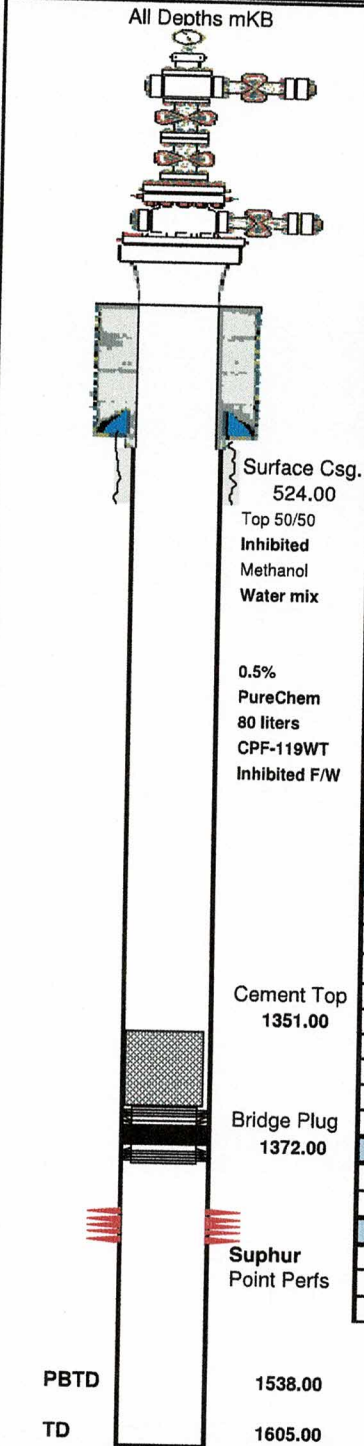


Fluid Movement Report - Well Suspension
STRATEGIC HB ET AL CAMERON J-62 60 10N, 117 15W • #1158

WELL DATA									
NAME				LICENSE #	COST CENTRE	UWI	LOCATION		
STRATEGIC HB ET AL CAMERON J-62 60 10N, 117 15W				1158			Cameron Hills NT, Canada		
COMPLETIONS DETAIL									
COMPLETIONS TYPE		START DATE	FINISH DATE	OBJECTIVE					
Standing Cased		2020-03-05	2020-03-13	Well Suspension					
fresh water									
DAILY FLUID MOVEMENT									
NOTE I-73									
DATE	COMPANY	TICKET	SOURCE/DEST	LEASE		WELL		REMAINING	
				TO	FROM	TO	FROM	TANK	WELL
2020-03-05	Longway Services	66548	I-73	25.60 m³				25.60 m³	0.00 m³
2020-03-05	NOTE Well kill					7.50 m³		18.10 m³	7.50 m³
TOTAL				25.60 m³	0.00 m³	7.50 m³	0.00 m³	18.10 m³	7.50 m³

Remarks - Well Suspension

WELL DATA				
NAME	LICENSE #	COST CENTRE	UWI	LOCATION
STRATEGIC HB ET AL CAMERON J-62 60 10N, 117 15W	1158		Unavailable	Cameron Hills NT, Canada
COMPLETIONS DATA				
NAME	START DATE	END DATE	AFE #	AFE AMOUNT
Well Suspension	2020-03-05	2020-03-13	20EWM-AB-002	\$0.00
Well Suspension Remarks				

[illegible]